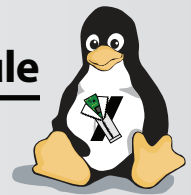




# Get Started with Overo™ Computer-on-Module



TI OMAP3503-based Overo™ Earth and Water COMs  
TI OMAP3530-based Overo™ Fire and Air COMs

## Specs

### Processor:

- OMAP3530
- OMAP3503

### Speed:

up to 720MHz

### Memory Options:

- No Flash
- 256MB Flash
- 256MB DDR
- 512MB DDR

### Dimensions:

58mm x 17mm x 4.2mm

TI OMAP35XX Processor with ARM® Cortex™-A8 implementing the NEON technology and VFPv3 Architecture

27-pin Flex Ribbon Connector for Camera Functions

\*Shield over 802.11b/g and Bluetooth Module

\*Bluetooth™ and 802.11b/g Antenna Connectors

Two 70-pin AVX Connectors

(top side)

MicroSD Card Slot

Mounting Holes at Each Corner

(bottom side)

Model: W2CWBW003

This device complies with part 15 of the FCC Rules. Operation is subject to the following two conditions: (1) This device may not cause harmful interference, and (2) this device must accept any interference received, including interference that may cause undesired operation.

FCC ID: U9R-W2CWBW003  
IC: 7089A-W2CWBW003



Wi2Wi, Inc.

**\*Available on Overo Fire, Air and FE COMs**

These units contain FCC ID: U9R-W2CMW003

The device must be used at least 20cm away from a user's body.

## Minimum System Requirements

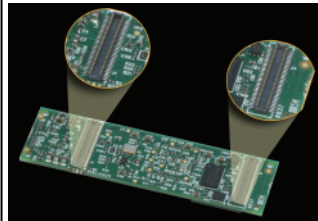
- Overo™ COM
- Expansion Board

Most configurations also require:

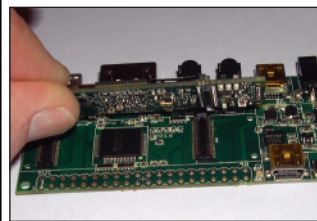
- Cable(s)
- Power supply

Products can be ordered separately or as part of a complete pack at [www.gumstix.com](http://www.gumstix.com)

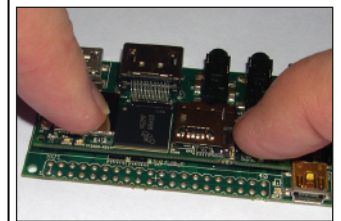
## Connecting an Expansion Board to an Overo™ COM



Expansion boards connect via the two 70-pin connectors



Align the 70-pin connectors board-to-board



And gently press until boards click into place

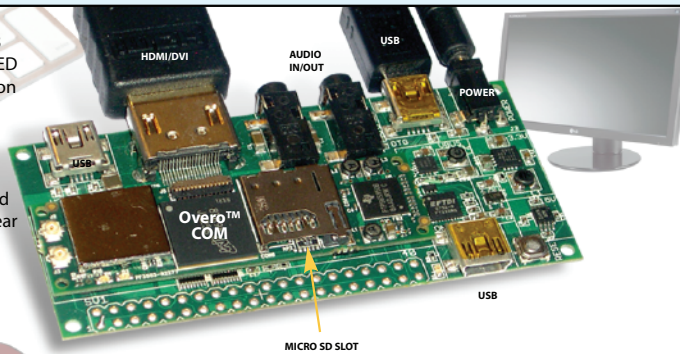
## Start with a Console Session

1. Connect a mini-B to standard A USB cable from USB console port to a USB port on your computer (green LED will illuminate). The computer will detect the connection

- Launch a terminal emulator such as kermit or Tera Term. Settings: 115200, 8n1

2. Plug 5V power supply into wall and expansion board LED will illuminate and Overo™ COM bootup will appear on the terminal session

- Log in as root (no password), and start exploring



## Adding Peripherals

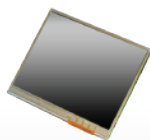
**Shut down and unplug before adding peripherals**

3. Connect display (Use an HDMI/DVI-D cable if necessary)
4. Add a keyboard and mouse through USB OTG port connected to a powered high speed USB hub
5. For custom bootup, insert a microSD card with a Linux kernel image and root file system

## Using a LCD Touchscreen

To set the 'defaultdisplay' variable in U-Boot:

- Hit 'Enter' to interrupt the boot sequence
- Type 'setenv defaultdisplay lcd43; saveenv;' and press 'Enter'. (replace 'lcd43' with 'lcd35' for 3.5" screens)
- Type 'reset' then press 'Enter' or simply press the 'reset' button on the expansion board



Visit [www.gumstix.org](http://www.gumstix.org) for the latest tools, resources, community info and help getting started.

